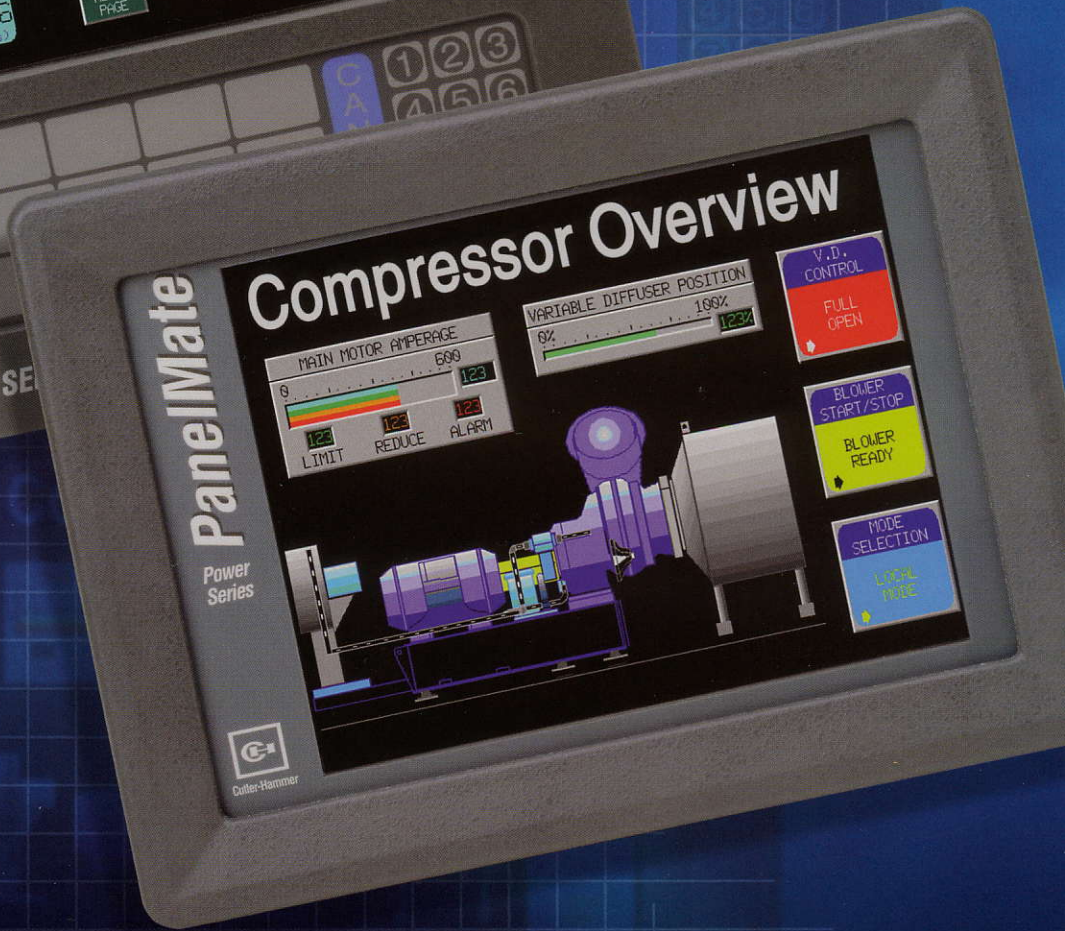


OPERATOR INTERFACE

PANELMATE POWER SERIES 1700



Cutler-Hammer

EATON

Imagine the capabilities of a high-end operator interface station squeezed into a compact footprint. Now imagine those features enhanced and expanded for today's demanding manufacturing environment.

Introducing the PanelMate[®] Power Series[™] 1700

Designed for no-compromise functionality and performance

The PanelMate Power Series 1700 incorporates all the benefits of the popular PanelMate Power Series line—then goes several steps further to deliver the latest technological advances to ensure reliability and performance. From optically isolated serial ports and multiple simultaneous communications interfaces, to ultrabright 300-nit color TFT displays, the PanelMate Power Series 1700 is engineered to improve operation and user friendliness in any industrial setting.

With more than 20 years of experience developing the industry's finest operator interface stations, Cutler-Hammer continues to deliver advanced automation products and solutions for today's ever-changing manufacturing environment.

High-end power in a compact and affordable package

Less than 3" deep and fitting an 11" x 8" cutout, the PanelMate Power Series 1700 delivers high-end performance you'd expect from a larger, more expensive unit. It is three times faster and has twice the capacity of its best-selling predecessor, the PanelMate 1500, while sharing the same dimensions. Each PanelMate Power Series 1700 unit—whether touchscreen or TouchPanel—supports up to 100 pages and 5000 messages for large applications. It features a choice of either 256-color TFT or dual scan displays, as well as a 256-grayscale option. Standard connections include two DB9 serial ports, relay out, horn out, and keyswitch in.

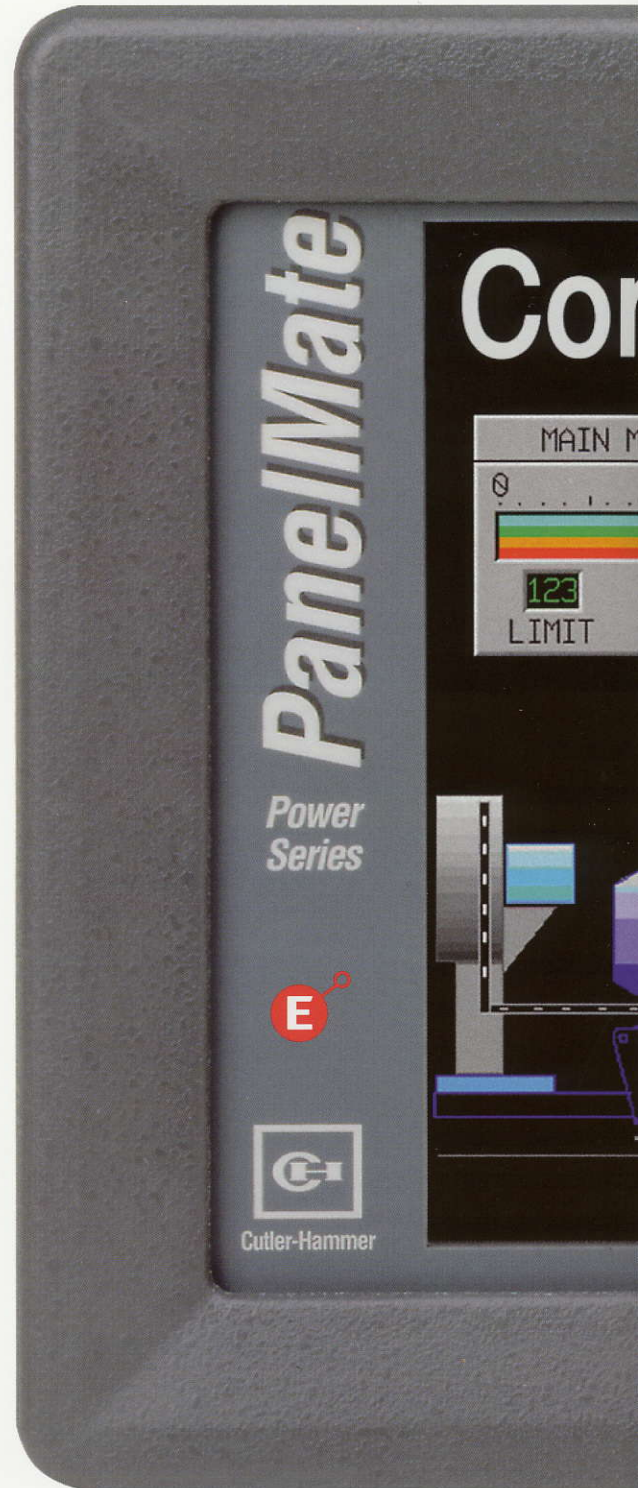
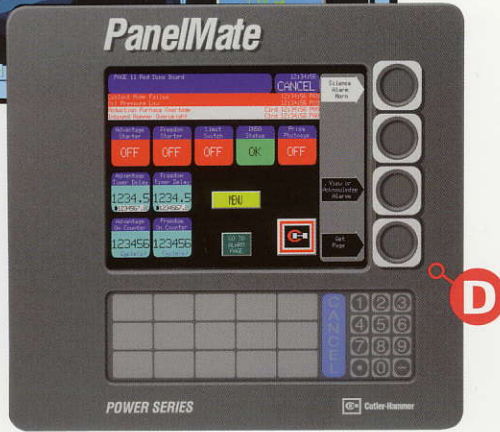
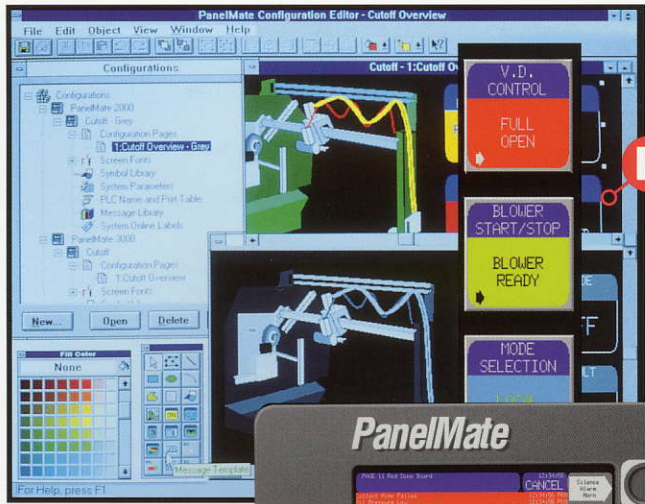
Compatible with all major PLCs and the most popular device and fieldbus networks

The PanelMate Power Series 1700 connects to today's fastest growing communications networks using two DB9 serial ports or easy add-on, high-speed interface modules. Connect to all major brands of PLCs whether they're on an RS-232, RS-422, RS-485-2, DeviceNet, PROFIBUS, Allen-Bradley DH/DH+/RIO, Modicon Modbus Plus, ControlNet or GE Genius I/O network.

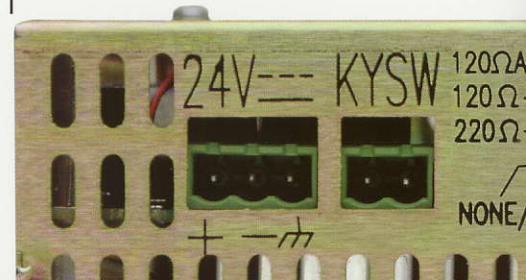
Time-saving configuration software

The PanelMate Power Series 1700 uses the same intuitive Windows-based configuration software as the rest of the Power Series line. Configure your application on your Windows[®] 3.1, 95, 98 or NT system and download it to your PanelMate. Upload a configuration for additional modification, cut and paste between applications, or swap configurations to and from other PanelMate Power Series systems.





- A** With an available ultrabright 300-nit TFT display, you'll find a display option that fits any application: 256-shade grayscale or 256-color dual scan or TFT displays with object-oriented pixel graphics and PowerGraphics.
- B** Built-in templates and control buttons include standard on-screen replacements for indicator lights, gauges, message displays and numeric readouts.
- C** The PanelMate Power Series 1700 communicates with PLCs and controllers from all major manufacturers. Optional high-speed interface modules also provide communication via industry-standard device and fieldbus networks.
- D** Touchscreen or TouchPanel models are easy to use and maintain. Backlights are field-replaceable. Rugged NEMA 4, 4X, 12 construction for all touchscreen and TouchPanel models.
- E** All models have capacity of up to 100 pages and 5000 messages.
- F** All displays are full resolution 640 x 480 VGA, not just 1/4 VGA like most competitive units.



Actual Size

Compressor Overview

COMPRESSOR AMPERAGE

600

123

123 123

REDUCE ALARM

VARIABLE DIFFUSER POSITION

0% 100%

123%

V.D. CONTROL

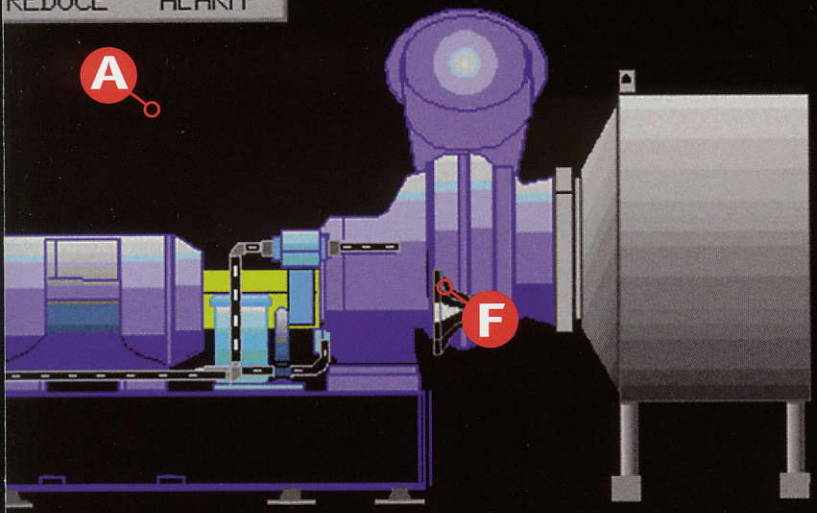
FULL OPEN

BLOWER START/STOP

BLOWER READY

MODE SELECTION

LOCAL MODE



7.63"

10.51"

9.38"

SERIAL PORT 1 SERIAL PORT 2

120Ω AC 120Ω 220Ω

NONE/RS232

AUDIO

FAULT RELAY

RS232

C



Cutler-Hammer, a part of Eaton Corporation, is a worldwide leader providing customer-driven solutions. From power distribution and electrical control products to industrial automation, Cutler-Hammer utilizes advanced product development, world-class manufacturing, and offers global engineering services and support.

For more information on Cutler-Hammer products, call 1-800-525-2000 or 1-616-982-1059, for engineering services call 1-800-498-2678, or visit our web site at www.cutlerhammer.eaton.com/automation



Cutler-Hammer

Milwaukee, Wisconsin

Publication No. B.09B.13.S.E
February 1999
Printed in U.S.A. / GSP 1151

PanelMate is a registered trademark of Eaton Corporation. Power Series, PowerGraphics, and Accelerat!On are trademarks of Eaton Corporation. Remote I/O Link, Data Highway and Data Highway Plus are trademarks of Allen-Bradley. Windows is a registered trademark of Microsoft Corp. Genius is a trademark of GE Fanuc Automation North America, Inc.
© 1999, Eaton Corp. All Rights Reserved.

EATON